

FOR LEASE

1,866 SF







RENT | \$1.85 GROSS
AVAILABLE AUGUST 1, 2025

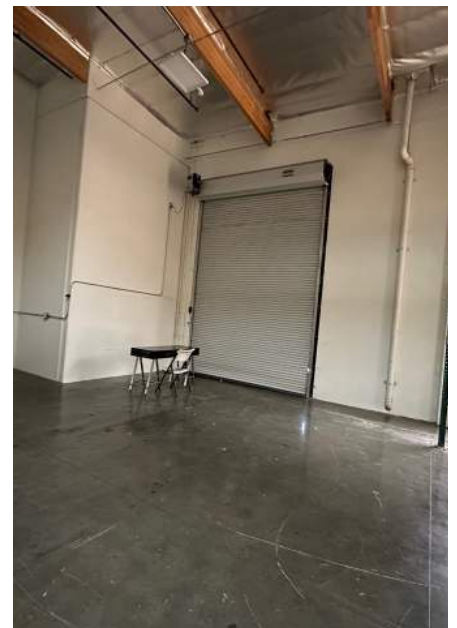
±300 SF METAL MEZZANINE



9027 | UNIT L
CANOGA AVENUE
CANOGA, CA

PROPERTY HIGHLIGHTS

-  MASTER PLANNED INDUSTRIAL PARK
-  20' CLEARANCE HEIGHT
-  APPROXIMATELY 150 SF OF OFFICE
-  3 PARKING SPACES
-  ONE 10'X14' GL ROLL-UP LOADING DOOR
-  CLOSE TO THE 118 FREEWAY



spectrumcre.com | 818.252.9900

SPECTRUM
COMMERCIAL REAL ESTATE, INC.



RON KASSAN



Executive Vice President
818.512.5001
ron@availablewarehouses.com
CA DRE Lic. #01063078

ART MINASSIAN



Senior Vice President
818.634.3722
art@availablewarehouses.com
CA DRE Lic. #02026662

No warranty, express or implied, is made as to the accuracy of the information contained herein. This information is submitted subject to errors, omission, change of price, rental or other conditions, withdrawal without notice, and is subject to any special listing conditions imposed by our principals. Cooperating brokers, buyers, tenants and other parties who receive this document should not rely on it, but should use it as a starting point of analysis, and should independently confirm the accuracy of the information contained herein through a due diligence review of the books, records, files and documents that constitute reliable sources of the information described herein. Spectrum Commercial Real Estate, Inc. CA DRE #02042805